

# PROFESSIONAL BATHROOM

## Remodel Steps



### 2. MEASUREMENTS

The contractor will need to come to your home and look at the bathroom you plan to remodel.



### 4. 3D RENDERINGS

Many professional remodeling contractors can provide you with 3d renderings of your planned remodel.



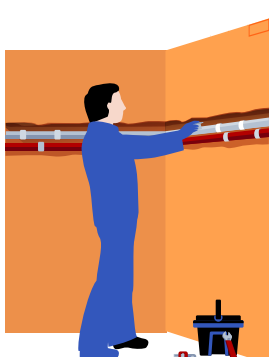
### 6. DEMOLITION

Demolition can proceed fairly quickly once the power and water supplies are turned off. Walls will come down.



### 8. ELECTRICAL

Now is the time to replace faulty wiring and bring it up to code. Wiring for new electrical fixtures will be installed.



### 10. VANITY, SINK, PLUMBING AND LIGHT FIXTURES.

Our pre-selected materials for these components will be installed. Don't forget other items like towel bars, rings, toilet paper holders, and mirrors.



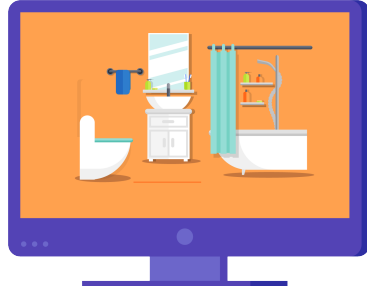
### 1. INITIAL CONSULTATION.

Meet with a reputable bathroom remodeling contractor to discuss your project. This is the time to ensure that you have realistic expectations about the cost and time involved in what you have in mind.



### 3. MATERIALS

Making decisions on your tile, fixtures, and flooring at early in the process is the best way to ensure a smooth project completion. Also, you will save yourself time and money by selecting all of your finish materials at the planning stage



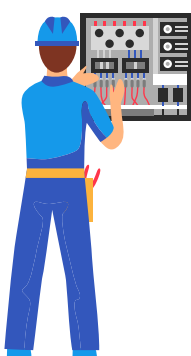
### 5. PERMITTING.

Your project must conform to state and local building codes. Your professional bathroom remodeling contractor will ensure that the project passes any necessary inspections such as plumbing and electrical as the project proceeds.



### 7. PLUMBING

Your contractor will need to install any new plumbing early in the project. The floor plan will show where each new feature will go



### 9. WALLS

Once all of the plumbing, electrical, and inspections are completed, the new walls can go up. New cement board or backer board will be installed in the wet areas like the shower, tub, and sink surrounds, and wherever new tile will go up.



### 11. TOUCH UP PAINT

The last task is to touch up trim and other painted areas that may have been damaged during the project.